



5 Cotswold Close Belrose NSW

3 1 2

Outstanding First Family Home in a Child-Friendly Cul-de-Sac

Well positioned in a desirable, peaceful, and convenient location, this superb single-level solid brick family home has been lovingly maintained by its original owners for an incredible 50 years.

Generous in space and filled with natural light, the home features multiple living, dining, and entertaining zones, perfectly designed to meet the needs of a growing family. Its versatile open-plan layout fosters connection while providing everyone with their own space, with the kitchen-like all good kitchens-serving as the heart of the home.

Type : House
Price : \$ 2,060,000
Land Size : 737 sqm
View : <https://www.skylinerealestate.com.au/sale/nsw/northern-beaches/belrose/residential/home/8228711>

[For full version visit the website](#)



Damien Dwyer
02 9452 3444

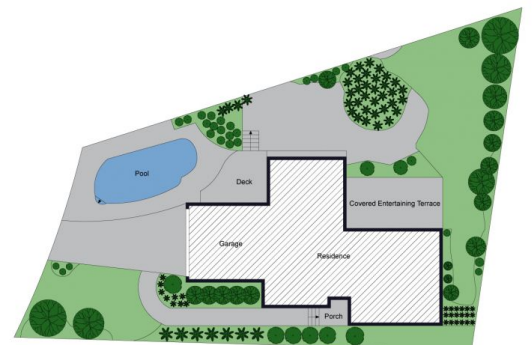
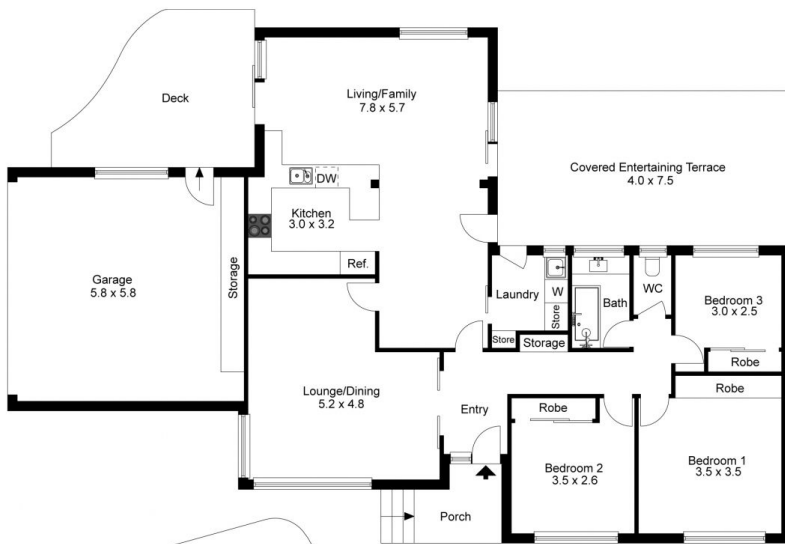


Stuart Bath
02 9452 3444

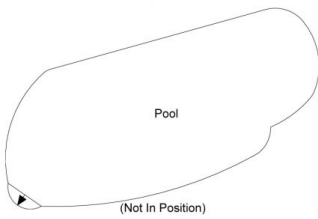


The floor plan is not to scale; measurements are indicative and in metres. All features included in this 3D plan are for inspiration purposes only. This is not an exact replica of the property or the position of exterior elements. Plans should not be relied on. Interested parties should make and rely on their own enquiries.

Produced by **DIAKRIT**



Site Plan



The floor plan is not to scale; measurements are indicative and in metres. Exterior elements are not in position. Plans should not be relied on. Interested parties should make and rely on their own enquiries.

Produced by **DIAKRIT**