



10/180 Pacific Parade Dee Why NSW

3 2 2

Claiming a rare North facing position with beach and sand views is this expansive 3 bedroom unit in the quality Tasman Building.

Fantastic beach lifestyle with this amazing location and all the services within easy walking distance.

Leading through the open plan design that flows freely from space to space, the floorplan features an oversized central living area that looks across to Dee Why beach.

There is plenty of room to relax peacefully, bask in fresh coastal breezes or entertain guests round the dinner table. A lovely benefit of this property is the spacious three bedroom configuration that caters to the needs of various demographics.

Type : Unit

Price : \$ 2,650,000

View : <https://www.skylinerealestate.com.au/sale/nsw/northern-beaches/dee-why/residential/unit/7981529>

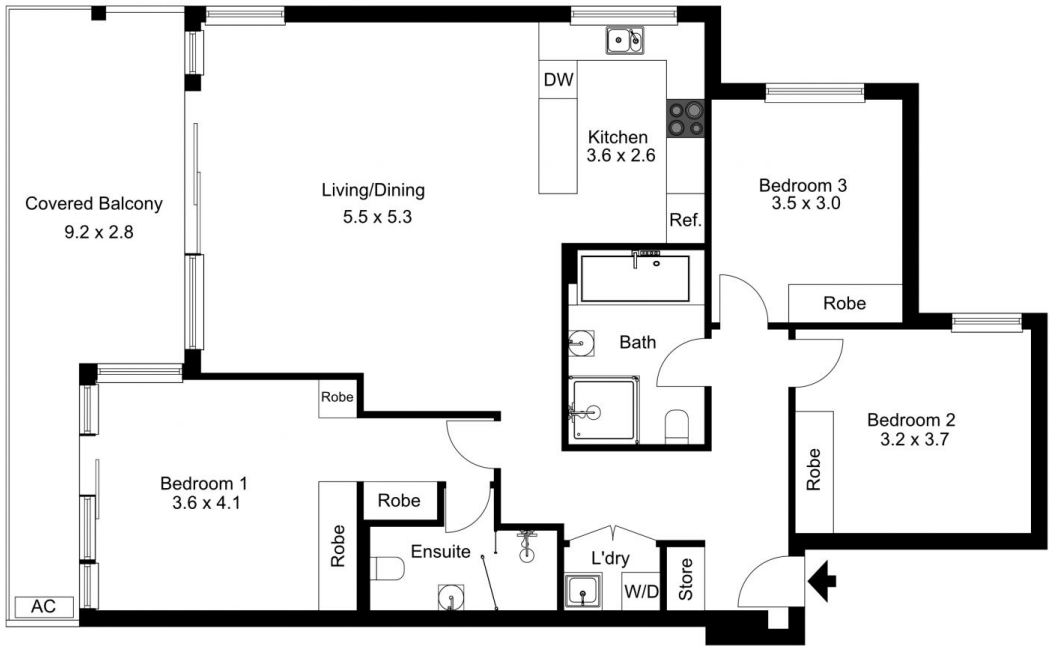


Stuart Bath
02 9452 3444



Damien Dwyer
02 9452 3444

[For full version visit the website](#)



The floor plan is not to scale; measurements are indicative and in metres. Exterior elements are not in position. Plans should not be relied on. Interested parties should make and rely on their own enquiries.

Produced by **DIAKRIT**



The floor plan is not to scale; measurements are indicative and in metres. All features included in this 3D plan are for inspiration purposes only. This is not an exact replica of the property or the position of exterior elements. Plans should not be relied on. Interested parties should make and rely on their own enquiries.

Produced by **DIAKRIT**