



**12 Peppercorn Drive Frenchs Forest NSW**

4 3 2

North facing on its exclusive and level 777sqm block, this stunning residence is defined by its contemporary refinement, impressive space and superb entertaining areas.

Presenting grand proportions with stunning architectural design, step inside to a striking home that incorporates a vast double height entrance hall with a mezzanine style upper level.

Meticulously built with 10' ceilings and a superb mix of formal and family living spaces. Stunning open plan kitchen with parquetry timber floors, huge 80mm stone island, a large complete butlers pantry plus Black Miele Appliance Tower.

The kitchen is open to the casual and formal meals areas and flows to the magnificent outdoor spaces.

The outdoor area offers a range of entertaining options with a lovely solar heated pool, a fully fitted outdoor kitchen,

**Land Size** : 777 sqm

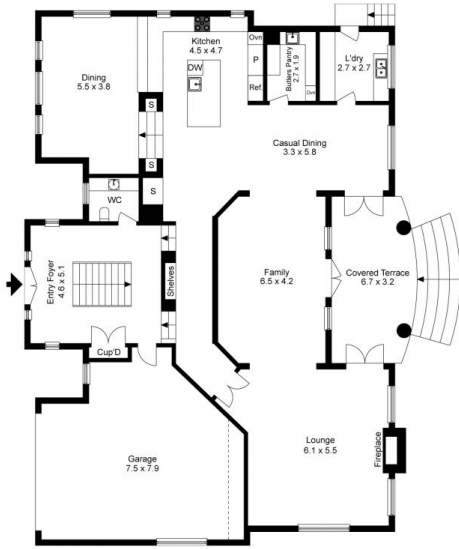
**View** : <https://www.skylinerealestate.com.au/sale/nsw/northern-beaches/frenchs-forest/residential/house/7807531>



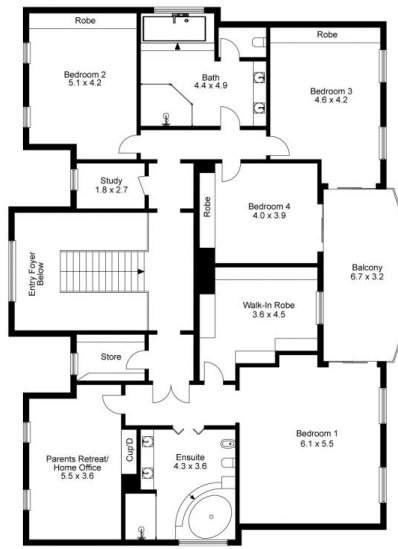
**Stuart Bath**  
02 9452 3444



**Damien Dwyer**  
02 9452 3444



Ground Floor



1st Floor



Site Plan



The site plan and floor plan are not to scale; measurements are indicative and in metres. Bushes and trees are placed for illustration purposes. Plans should not be relied on. Interested parties should make and rely on their own enquiries.

Produced by **DIAKRIT**



Ground Floor



1st Floor



The floor plan is not to scale; measurements are indicative and in metres. All features included in this 3D plan are for inspiration purposes only. This is not an exact replica of the property or the position of exterior elements. Plans should not be relied on. Interested parties should make and rely on their own enquiries.

Produced by **DIAKRIT**