



22 Greendale Avenue Frenchs Forest NSW

5 3 3

Positioned to take full advantage of the level 783sqm block, this exceptional family residence is tailored to those who seek an easy lifestyle and entertaining family and friends. Designed with meticulous attention to detail, this generously proportioned home effortlessly embraces its leafy setting and sun-drenched orientation.

A variety of spacious living areas set this property apart, making it a haven for families seeking both luxury and convenience. This unique offering, coming to the market for the first time in over twenty years, provides serene privacy, with a focus on quiet and easy living; yet still close to shops, local primary & high schools - a rare gem for the discerning family.

Features

- An open-plan living and dining area with large windows and ample natural light.
- A gourmet kitchen, boasting induction cooktop, oversize

Land Size : 783 sqm

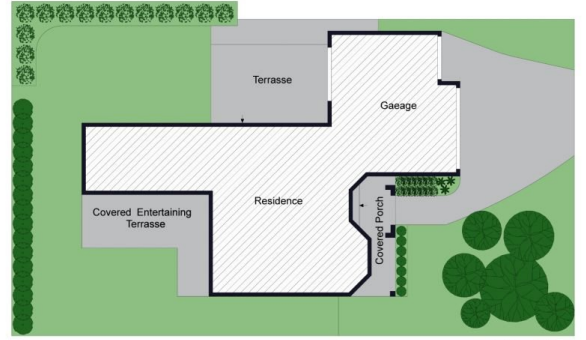
View : <https://www.skylinerealestate.com.au/sale/nsw/northern-beaches/frenchs-forest/residential/house/7781002>



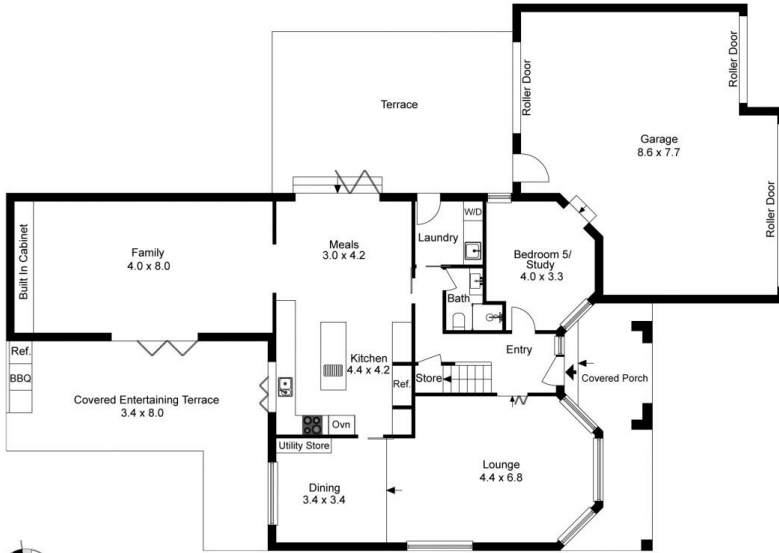
Stuart Bath
02 9452 3444



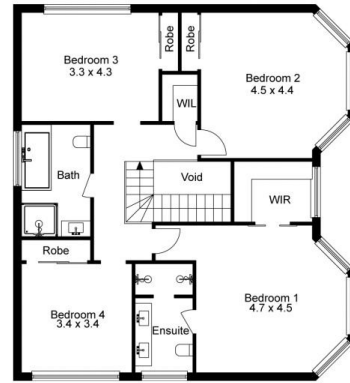
Damien Dwyer
02 9452 3444



Site Plan



Ground Floor



1st Floor



The floor plan is not to scale; measurements are indicative and in metres. Exterior elements are not in position. Plans should not be relied on. Interested parties should make and rely on their own enquiries.

Produced by DIAKRIT



Ground Floor



1st Floor



The floor plan is not to scale; measurements are indicative and in metres. All features included in this 3D plan are for inspiration purposes only. This is not an exact replica of the property or the position of exterior elements. Plans should not be relied on. Interested parties should make and rely on their own enquiries.

Produced by DIAKRIT