



88 Epping Drive Frenchs Forest NSW

3 1 4

Capturing open district views this lovely family home promises the chance for quiet and peaceful living.

Young families moving into the locale are sure to be delighted by the sun-drenched pool area and lovely outdoor spaces, perfect for entertaining.

The home is on a sizeable 708sqm block with plenty of grass area

- Stylish interiors reveal sun drenched living room with open plan dining
- Additional space with a Family / TV Room plus a separate Home Office or Utility area
- The large balcony overlooks the level front lawn and takes in the views
- The inground pool on the North side receives sun all day
- Updated kitchen with stainless appliances and granite benchtops
- Three bedrooms, main with built ins, full bathroom plus

Price : \$ 2,185,000

Land Size : 708 sqm

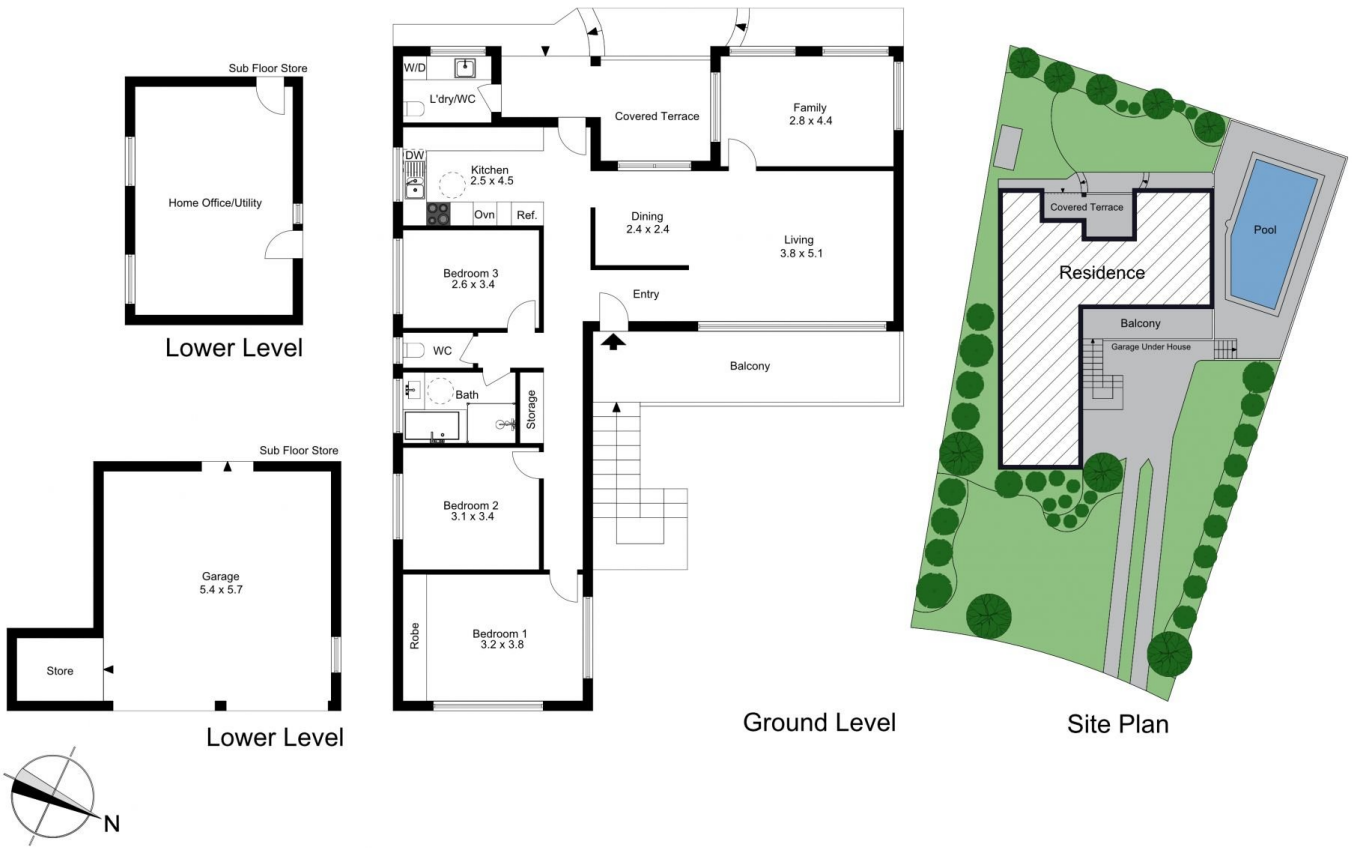
View : <https://www.skylinerealestate.com.au/sale/nsw/northern-beaches/frenchs-forest/residential/house/7585663>



Stuart Bath
02 9452 3444



Damien Dwyer
02 9452 3444



The site plan and floor plan are not to scale; measurements are indicative and in metres. Bushes and trees are placed for illustration purposes. Plans should not be relied on. Interested parties should make and rely on their own enquiries.

Produced by **DIAKRIT**



The floor plan is not to scale; measurements are indicative and in metres. All features included in this 3D plan are for inspiration purposes only. This is not an exact replica of the property or the position of exterior elements. Plans should not be relied on. Interested parties should make and rely on their own enquiries.

Produced by **DIAKRIT**