



**1 Irma Place Frenchs Forest NSW**

5 3 4

Positioned in a prime, quiet tree-lined streetscape, this admired architect designed contemporary home opens to reveal an exceptional floor plan perfectly in tune with family requirements

Fitted out with first class fixtures, fittings and appliances, the timeless design will suit your family for many years to come

The very spacious living zones open out to the stunning pool area and the large alfresco terrace

This home leaves your family wanting for nothing. Comfort, convenience, functionality and fun are all taken care of. There are brilliant spaces for everyone, from the studios homebody, the outdoor entertainer to the gourmet home chef.

Features:-

- \* Five double bedrooms all with built-in wardrobes
- \* Includes the plus-sized master bedroom with full ensuite,

**Land Size** : 626 sqm

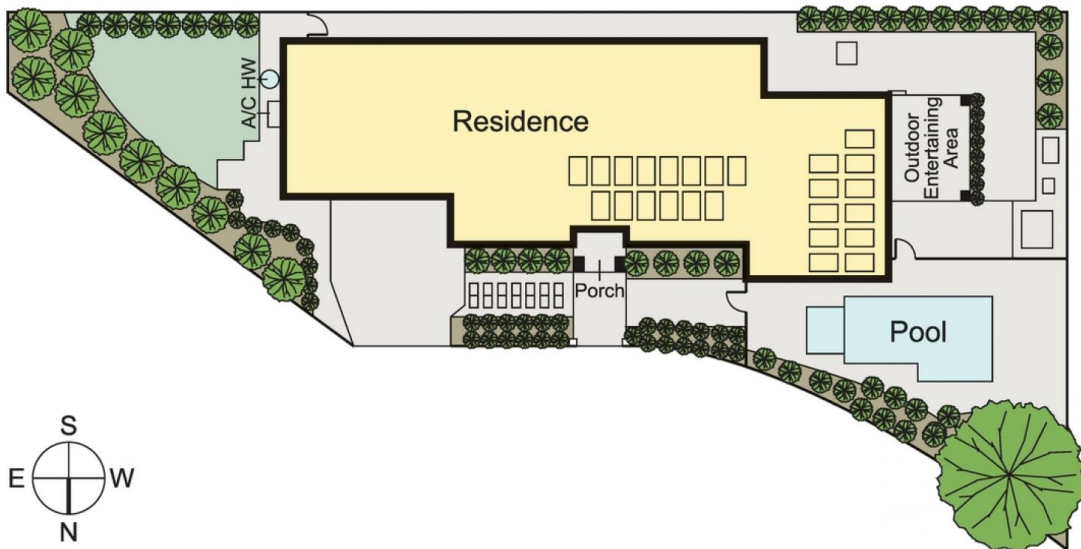
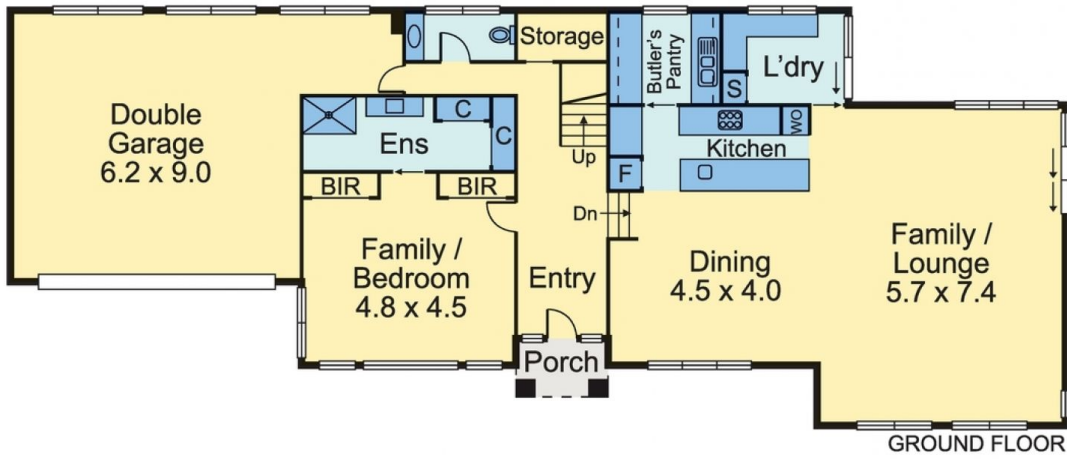
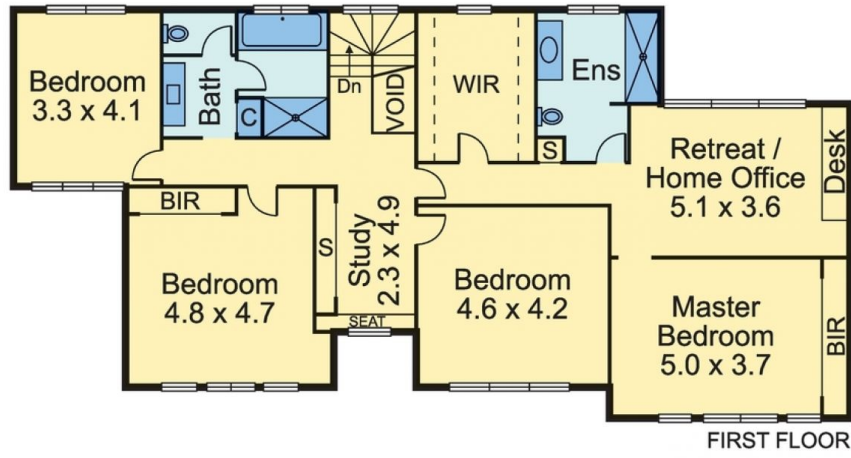
**View** : <https://www.skylinerealestate.com.au/sale/nsw/northern-beaches/frenchs-forest/residential/house/6840639>



**Stuart Bath**  
02 9452 3444



**Nicole Holicky**  
02 9452 3444



Every care has been taken to verify the accuracy of the details and dimensions in this property plan.  
 Prospective purchasers are advised to make their own enquiries to satisfy themselves in all respects.  
 The plan is a representation only and is not necessarily to scale.