



**18 Patanga Road Frenchs Forest NSW**

6 3 4

This is a super spacious, solid full brick home in a great location

Offers an impressive level of quality with many extras  
Flexible floorplan with either a huge 6 bedroom family home or 4 Bedrooms with a separate 2 bedroom flat

Upstairs Includes:-

4 bedrooms with built-in robes plus study, ensuite to main plus full bathroom and additional powder room

Huge living area with open lounge and dining  
Chef's kitchen with enormous bench space, walk-in pantry, quality appliances and open plan family room

Ducted air-conditioning, 2 x balconies, views and plenty of natural sunlight

Downstairs includes:-

2 bedrooms, full bathroom, huge living / dining room, kitchenette, sauna room, large laundry and access to undercover entertaining area

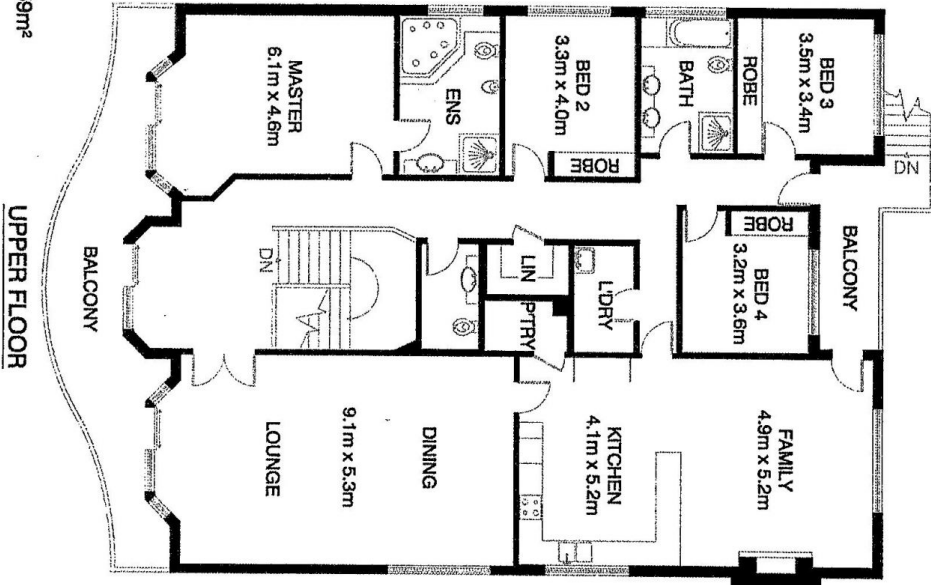
**Land Size** : 639 sqm

**View** : <https://www.skylinerealestate.com.au/lease/nsw/northern-beaches/frenchs-forest/residential/house/6474145>

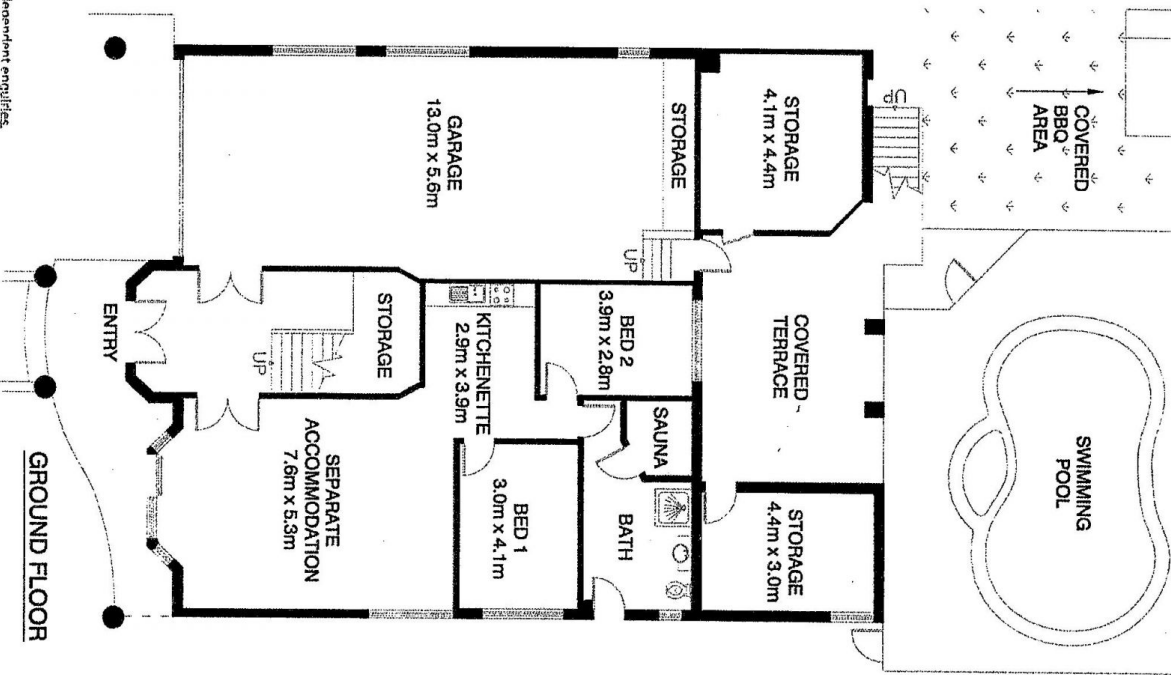


**Michelle Smart**  
02 9452 3444

**\*INTERNAL FLOOR AREA APPROX 459m<sup>2</sup>  
INCL GARAGE**



**UPPER FLOOR**



**GROUND FLOOR**

\*PLANS SHOWN ONLY INDICATIVE OF LAYOUT. DIMENSIONS ARE APPROXIMATE.  
Floor plan supplied by V-Mark Design Pty Ltd. This floor plan is provided for indicative purposes only.  
\*Not to be used for construction. Intended for use as a guide only. Please refer to the architect for the most current information. Intended for use as a guide only. Please refer to the architect for the most current information. Intended for use as a guide only. Please refer to the architect for the most current information.