



#### 4 Inverness Avenue Frenchs Forest NSW

5 2 2

Beautifully transformed light and airy family home providing an ideal environment for the growing family and ready to move in.

Located opposite Patanga Park, this home is a haven for families and entertainers.

Positioned on 638sqm block with an enclosed level rear garden, this prime central location is within a two minute stroll of Skyline Shops, City / Chatswood bus stops, numerous primary schools, and close to the new hospital and proposed shopping precinct. A short stroll to the Sunday Farmers Markets.

The spacious living area showcases large windows, providing a light-filled interior, cool breezes and views across Patanga Park. The fireplace ensures cozy winters, heating the entire home. The large and functional kitchen

**Price** : \$ 1,665,000

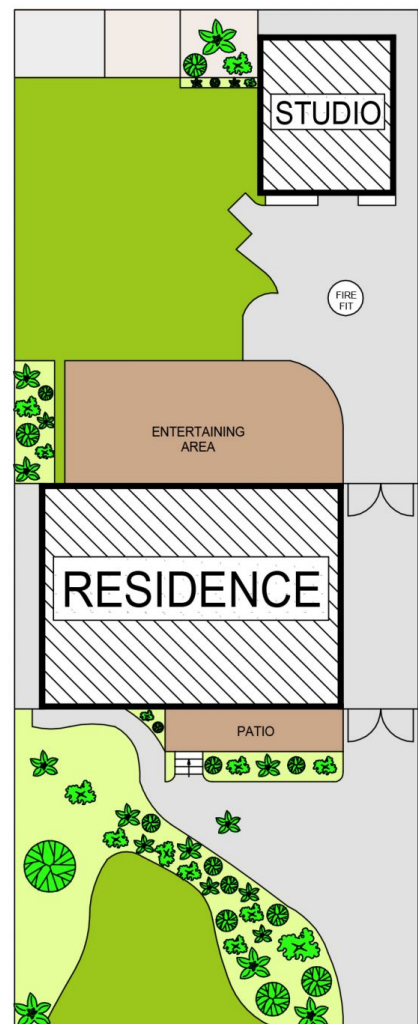
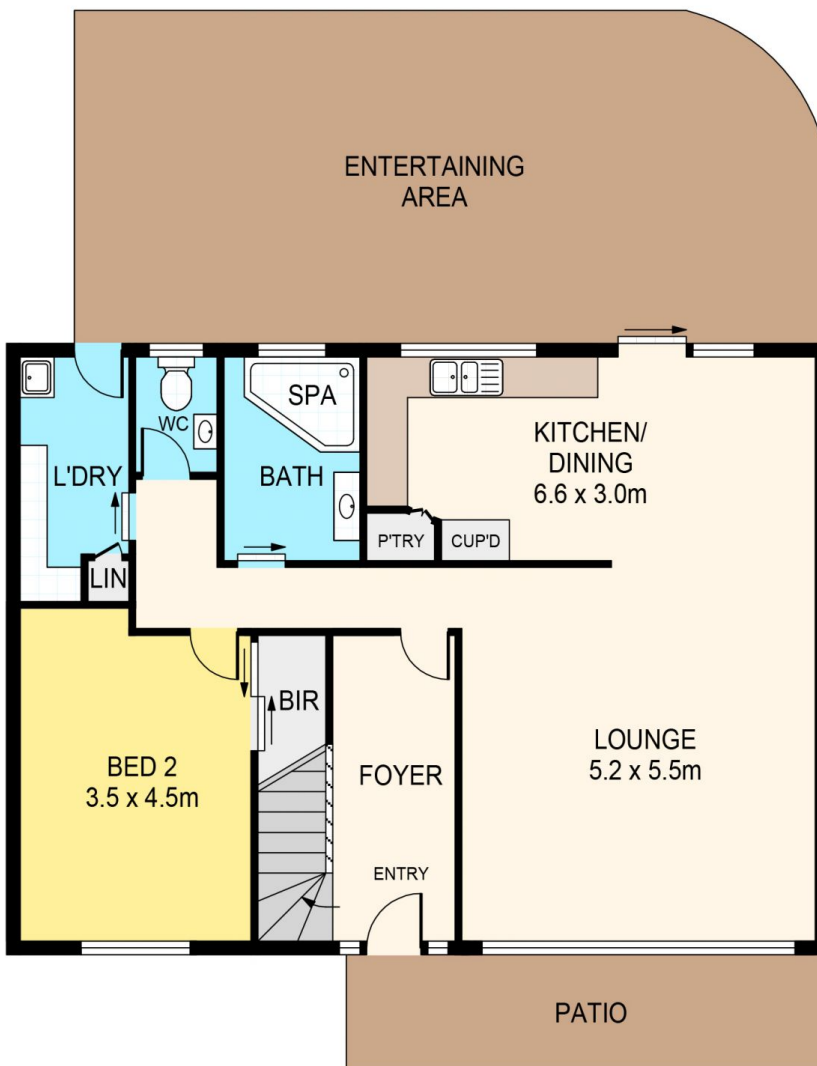
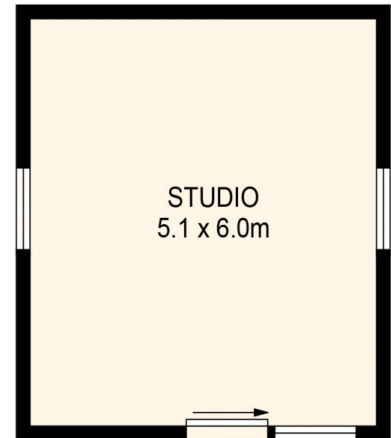
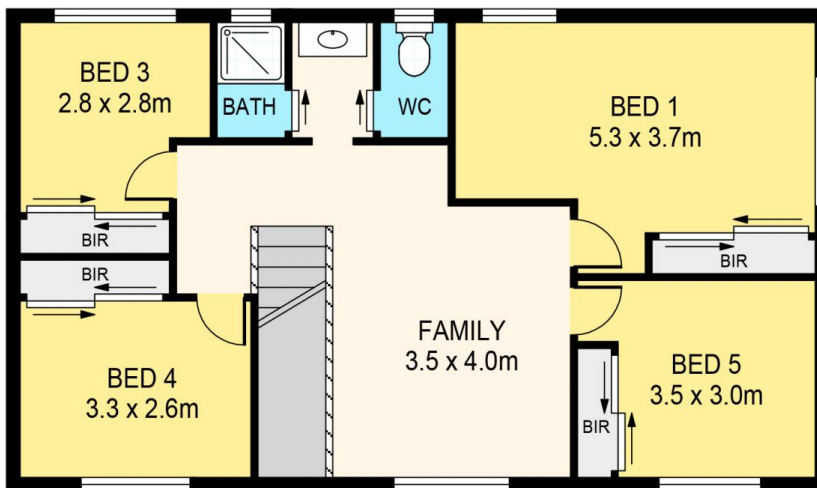
**Land Size** : 642 sqm

**View** : <https://www.skylinerealestate.com.au/sale/nsw/northern-beaches/frenchs-forest/residential/house/5824239>



**Stuart Bath**  
02 9452 3444

# 4 INVERNESS AVENUE, FRENCHS FOREST



## DISCLAIMER:

PLANS SHOWN ARE FOR MARKETING PURPOSES ONLY, ALL DIMENSIONS ARE APPROXIMATE AND NOT TO SCALE. THEY ARE SUBJECT TO ERRORS AND INACCURACIES AND NO LIABILITY WILL BE ACCEPTED. INTERESTED PARTIES SHOULD MAKE THEIR OWN INQUIRES.