



39 Epping Drive Frenchs Forest NSW

3 1 1

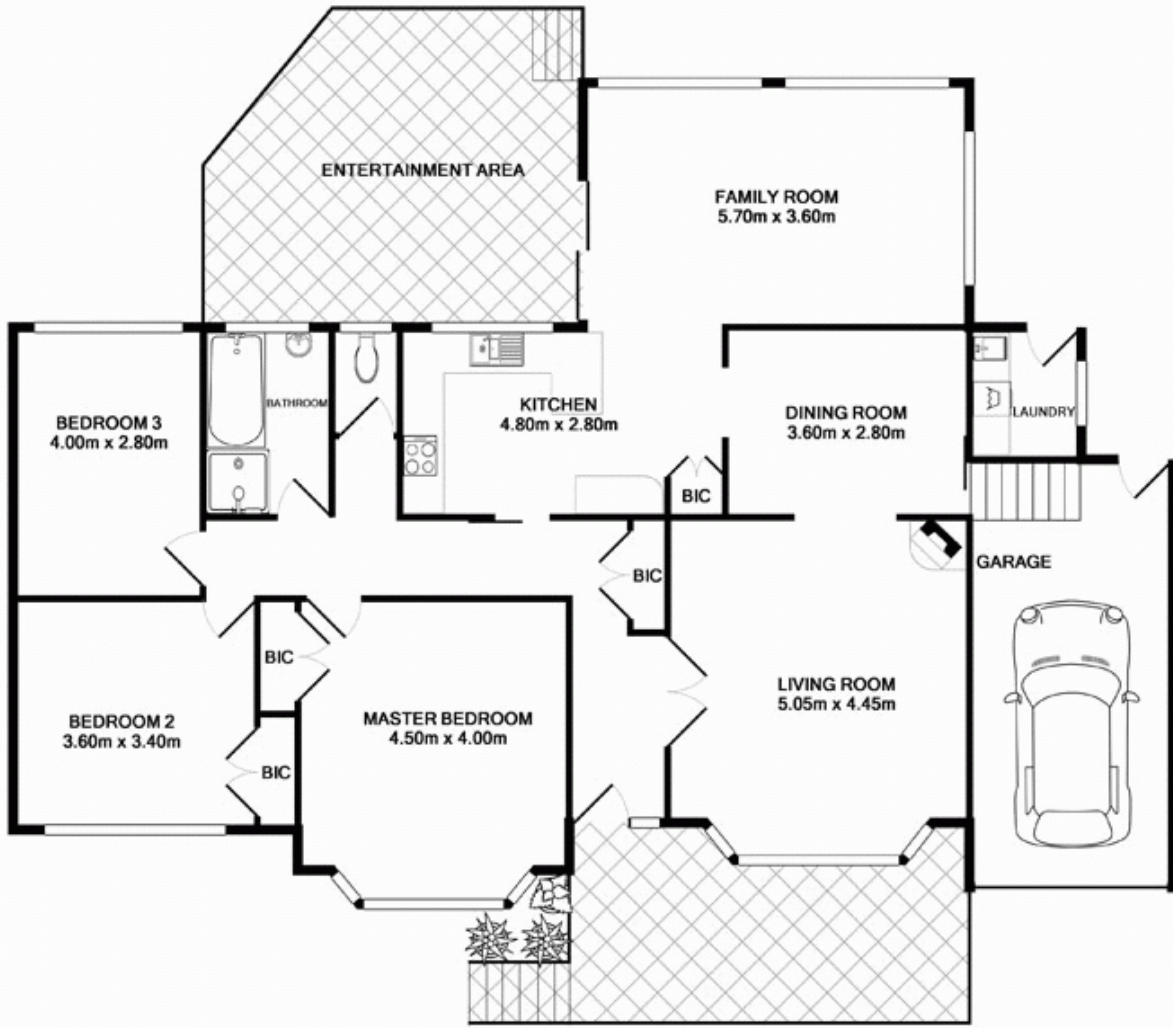
This well maintained & very attractive single level brick residence offers an expansive child-friendly rear yard and a lovely balance of modern family living with outdoor entertaining in a quiet, leafy setting.

With an open district outlook, the home offers 3 generous sized bedrooms, separate lounge & dining rooms plus a spacious family room adjacent to the modern eat-in kitchen that flows to the large covered entertaining deck.

There's an updated bathroom with separate toilet and the single lock-up garage features a large storage loft above with internal access into the home.

Families will appreciate the large, fully fenced grassed backyard where kids have plenty of space to run around and parents can easily supervise them from the kitchen

Land Size : 696 sqm
View : <https://www.skylinerealestate.com.au/lease/nsw/northern-beaches/frenchs-forest/residential/house/5824052>



TOTAL APPROX. FLOOR AREA 151.7 SQ.M. (1633 SQ.FT.)
Measurements are approximate. Not to Scale. For illustrative purposes only.