



3 Fitzpatrick Avenue West Frenchs Forest NSW

3 1 1

This is a fantastic opportunity for builders, renovators or developers. Huge Level block of 1,036sqm within easy level walk to Forest Way Shopping Centre and close to City/Chatswood/Manly Bus.

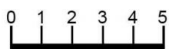
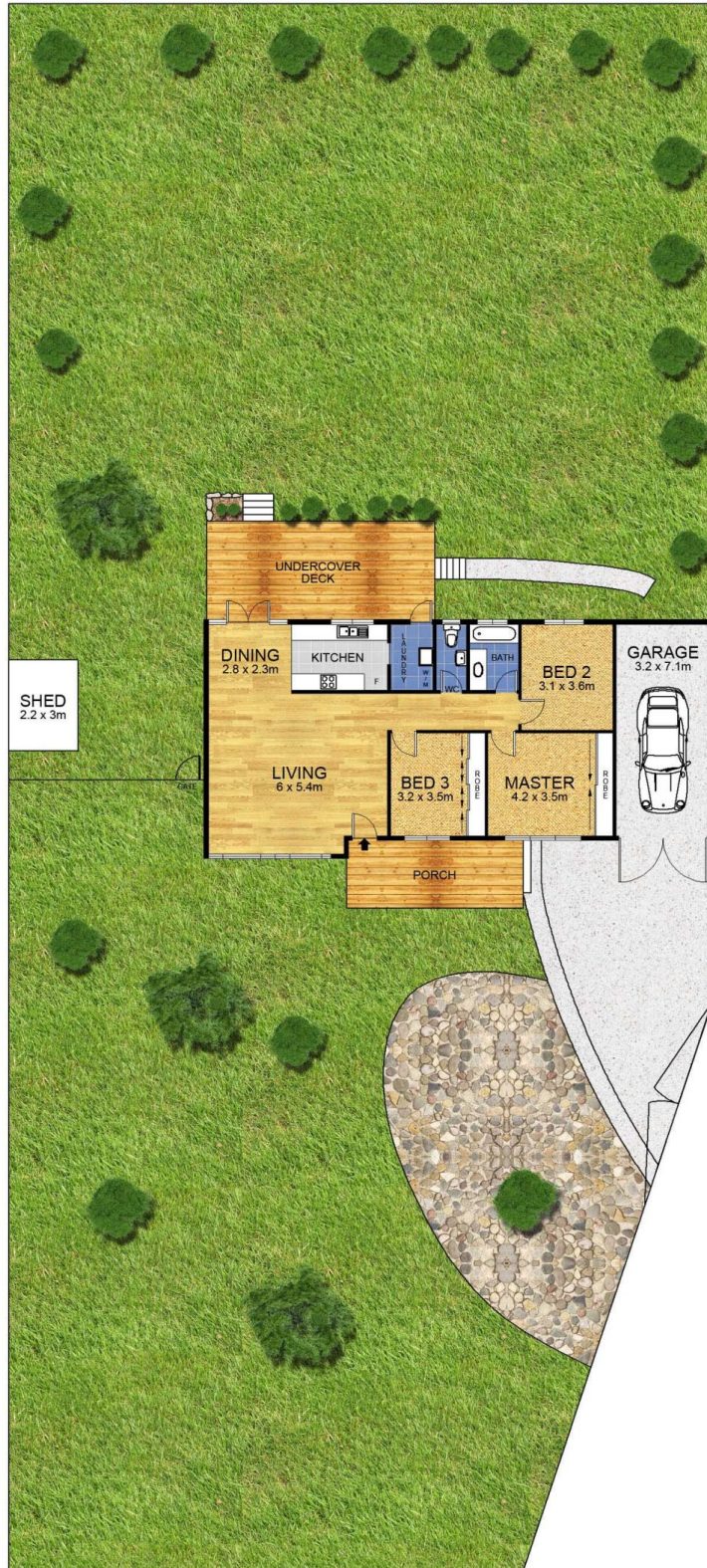
- Council Approved plans for 4 x 2+ Bedroom units for Over 55's
- Two units at ground level with lovely yard spaces and two top level units with large terraces and district outlooks
- The current home is spacious and ideal to rent out before commencement of building
- The modern kitchen looks over the lovely rear garden and is open to the living areas
- Double French doors lead out to a large undercover deck and the rear yard
- Three bedrooms, timber floors and high ceilings

Type : House
Price : \$ 910,000
Land Size : 1036 sqm
View : <https://www.skylinerealestate.com.au/sale/nsw/northern-beaches/frenchs-forest/residential/house/5823831>



Stuart Bath
02 9452 3444

[For full version visit the website](https://www.skylinerealestate.com.au)



Scale in metres. Indicative only. Dimensions are approximate. All information contained herein is gathered from sources we believe to be reliable. However we cannot guarantee its accuracy and interested persons should rely on their own enquiries.

INT	: 101m ²	
GARAGE	: 24m ²	
SHED	: 7m ²	
EXT	: 37m ²	



	PROJECT: SEPP HOUSING FOR SENIORS & PEOPLE WITH DISABILITIES 3 FITZPATRICK AVENUE WEST FRFNCHS FOREST NSW 2086	DRAWING TITLE: ROOF PLAN	CAD FILE: J404_RoofPlan.dwg
	PROJECT NO: 101124	SCALE: 1:200	REGION: DL CAD: DL
DRAWING NO: DA04	DATE: 15 JUNE 2012	DRAWING STATUS: DEVELOPMENT APPLICATION	REVISION: G